

NHS Lanarkshire

April 2006 - March 2007

source: EDIS A&amp;E system

**Table 1a - A&E first attendances by Site and Referral Source**

Attendances per site per referral source

Site	Total attendances	Emergency services	GP/Primary Care / OOH	Local Authority services	NHS24	Other clinical services	Other / Unknown	Self
HM	54509	5967	4649	91	1225	313	2241	40023
MK	63145	5742	9450	453	2644	1768	1990	41098
WG	66248	13791	4747	67	1685	187	2454	43317
<b>Total</b>	<b>183902</b>	<b>25500</b>	<b>18846</b>	<b>611</b>	<b>5554</b>	<b>2268</b>	<b>6685</b>	<b>124438</b>

**Table 1b**

Proportions per site per referral source

Site	Total attendances	Emergency services	GP/Primary Care / OOH	Local Authority services	NHS24	Other clinical services	Other / Unknown	Self
Hairmyres	100%	11%	9%	0%	2%	1%	4%	73%
Monklands	100%	9%	15%	1%	4%	3%	3%	65%
Wishaw	100%	21%	7%	0%	3%	0%	4%	65%
<b>Total</b>	<b>100%</b>	<b>14%</b>	<b>10%</b>	<b>0%</b>	<b>3%</b>	<b>1%</b>	<b>4%</b>	<b>68%</b>

**Table 2a - Self Referrals by Site and Mode of Transport**

Attendances by site per mode of transport

Site	Total attendances	Ambulance	Police	Own transport	Public transport	Taxi	Walking	Works transport	Other / Unknown
HM	<b>40023</b>	4118	40	32113	155	396	95	42	3064
MK	<b>41098</b>	5136	65	26194	593	2217	620	685	5588
WG	<b>43317</b>	1258	25	37675	29	290	1222		2818
<b>Total</b>	<b>124438</b>	<b>10512</b>	<b>130</b>	<b>95982</b>	<b>777</b>	<b>2903</b>	<b>1937</b>	<b>727</b>	<b>11470</b>

**Table 2b**

Proportions per site per mode of transport

Site	Total attendances	Ambulance	Police	Own transport	Public transport	Taxi	Walking	Works transport	Other / Unknown
Hairmyres	100%	10%	0%	80%	0%	1%	0%	0%	8%
Monklands	100%	12%	0%	64%	1%	5%	2%	2%	14%
Wishaw	100%	3%	0%	87%	0%	1%	3%	0%	7%
<b>Total</b>	<b>100%</b>	<b>8%</b>	<b>0%</b>	<b>77%</b>	<b>1%</b>	<b>2%</b>	<b>2%</b>	<b>1%</b>	<b>9%</b>

**Table 3 - A&E first attendances by Site and (A) Brought, Referred or Directed or (B) Self referred and not directed**

based on combination of referral source and mode of transport to A&amp;E

Attendances by (A) or (B) above

Hospital	Total	(A)	(B)
HM	54,509	17,708	36,801
MK	63,145	26,279	36,866
WG	66,248	21,933	44,315
<b>Total</b>	<b>183,902</b>	<b>65,920</b>	<b>117,982</b>

Proportions by (A) or (B) above

(A)	(B)
32%	68%
42%	58%
33%	67%
<b>36%</b>	<b>64%</b>

NHS Lanarkshire

April 2006 - March 2007

source: EDIS A&amp;E system

**Table 4a - A&E first attendances by Site and Unscheduled Care Flow Group**

Attendances per site per flow group

Site	Total attendances	Minor Injury & Illness	Acute Assessment	Medical admissions	Surgical admissions	Deaths
Hairmyres	<b>54,509</b>	35,877	6,915	7,778	3,848	91
Monklands	<b>63,145</b>	35,885	9,842	12,165	5,166	87
Wishaw	<b>66,248</b>	44,061	8,877	8,574	4,632	104
<b>Total</b>	<b>183,902</b>	<b>115,823</b>	<b>25,634</b>	<b>28,517</b>	<b>13,646</b>	<b>282</b>

**Table 4b**

Proportions per site per flow group

Site	Total attendances	Minor Injury & Illness	Acute Assessment	Medical admissions	Surgical admissions	Deaths
Hairmyres	<b>100%</b>	66%	13%	14%	7%	0%
Monklands	<b>100%</b>	57%	16%	19%	8%	0%
Wishaw	<b>100%</b>	67%	13%	13%	7%	0%
<b>Total</b>	<b>100%</b>	<b>63%</b>	<b>14%</b>	16%	7%	0%

**Table 5a - (A) Brought, Referred or Directed attendances by Site and Unscheduled Care Flow Group**

based on combination of referral source and mode of transport to A&amp;E

Attendances per site per flow group

Site	Total attendances	Minor Injury & Illness	Acute Assessment	Medical admissions	Surgical admissions	Deaths
Hairmyres	<b>17708</b>	5176	3381	6381	2691	79
Monklands	<b>26279</b>	6724	5710	10050	3722	73
Wishaw	<b>21933</b>	7461	4349	7051	2970	102
<b>Total</b>	<b>65920</b>	<b>19361</b>	<b>13440</b>	<b>23482</b>	<b>9383</b>	<b>254</b>

**Table 5b - (A) Brought, Referred or Directed attendances as a proportion of total attendances by Site and Unscheduled Care Flow Group**

based on combination of referral source and mode of transport to A&amp;E

Attendances per site per flow group

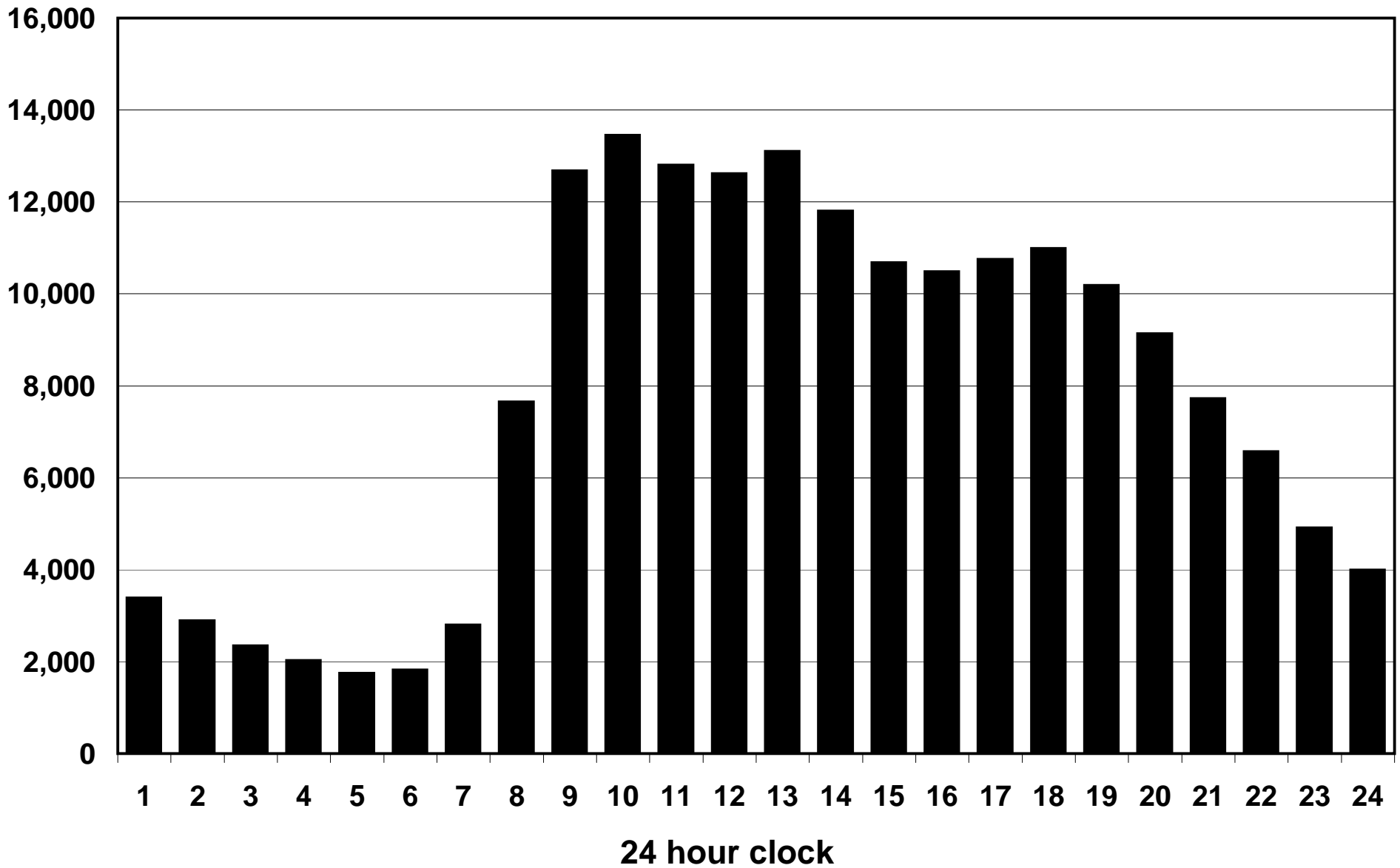
Site	All Flow Groups	Minor Injury & Illness	Acute Assessment	Medical admissions	Surgical admissions	Deaths
Hairmyres	32%	14%	49%	82%	70%	87%
Monklands	42%	19%	58%	83%	72%	84%
Wishaw	33%	17%	49%	82%	64%	98%
<b>Total</b>	<b>36%</b>	<b>17%</b>	<b>52%</b>	<b>82%</b>	<b>69%</b>	<b>90%</b>

**Table 6 - (B) Self Referred and not directed attendances by Site and Unscheduled Care Flow Group**

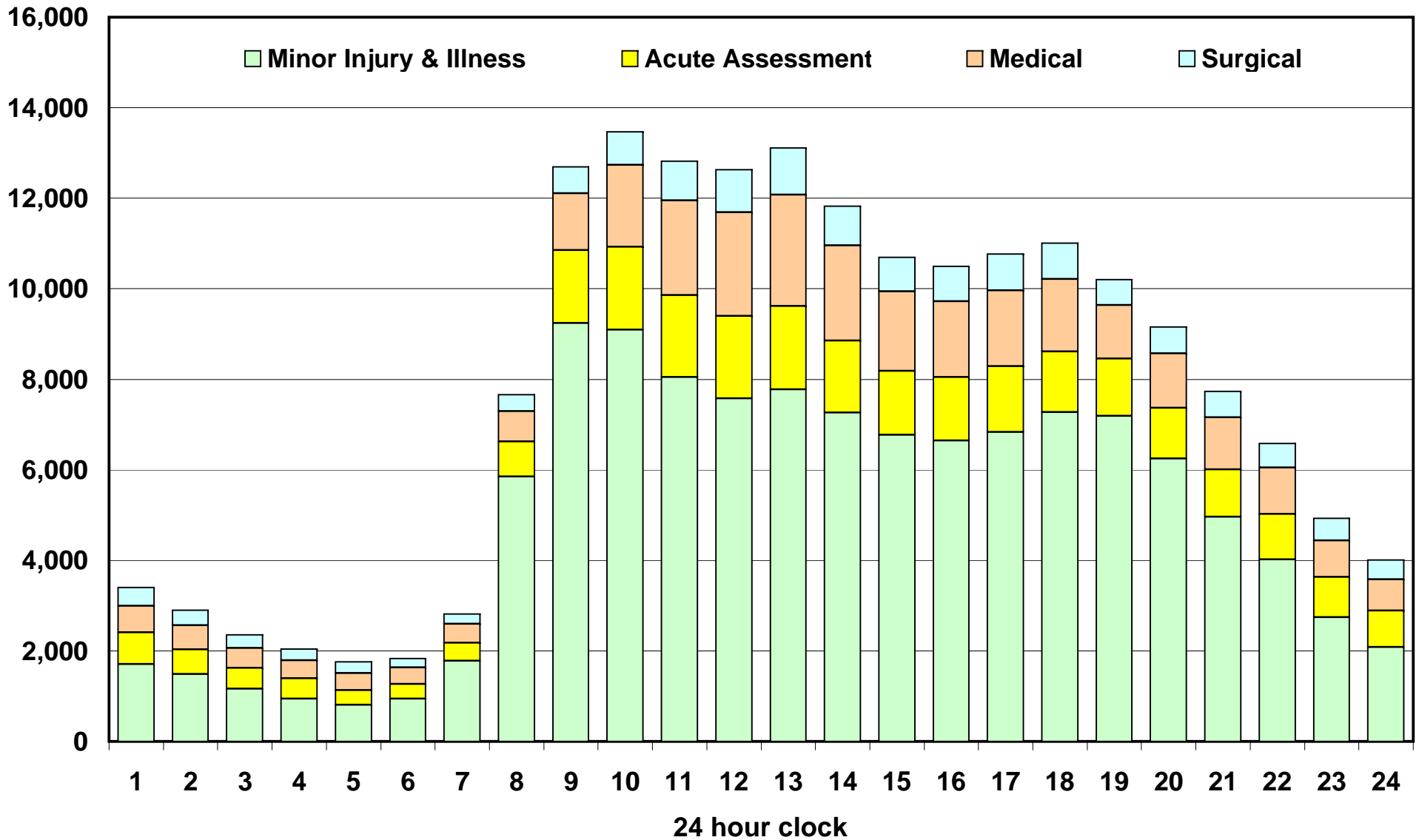
based on combination of referral source and mode of transport to A&amp;E

Site	All Flow Groups	Minor Injury & Illness	Acute Assessment	Medical admissions	Surgical admissions	Deaths
HM	<b>36801</b>	30701	3534	1397	1157	12
MK	<b>36866</b>	29161	4132	2115	1444	14
WG	<b>44315</b>	36600	4528	1523	1662	2
<b>Total</b>	<b>117982</b>	<b>96462</b>	<b>12194</b>	<b>5035</b>	<b>4263</b>	<b>28</b>

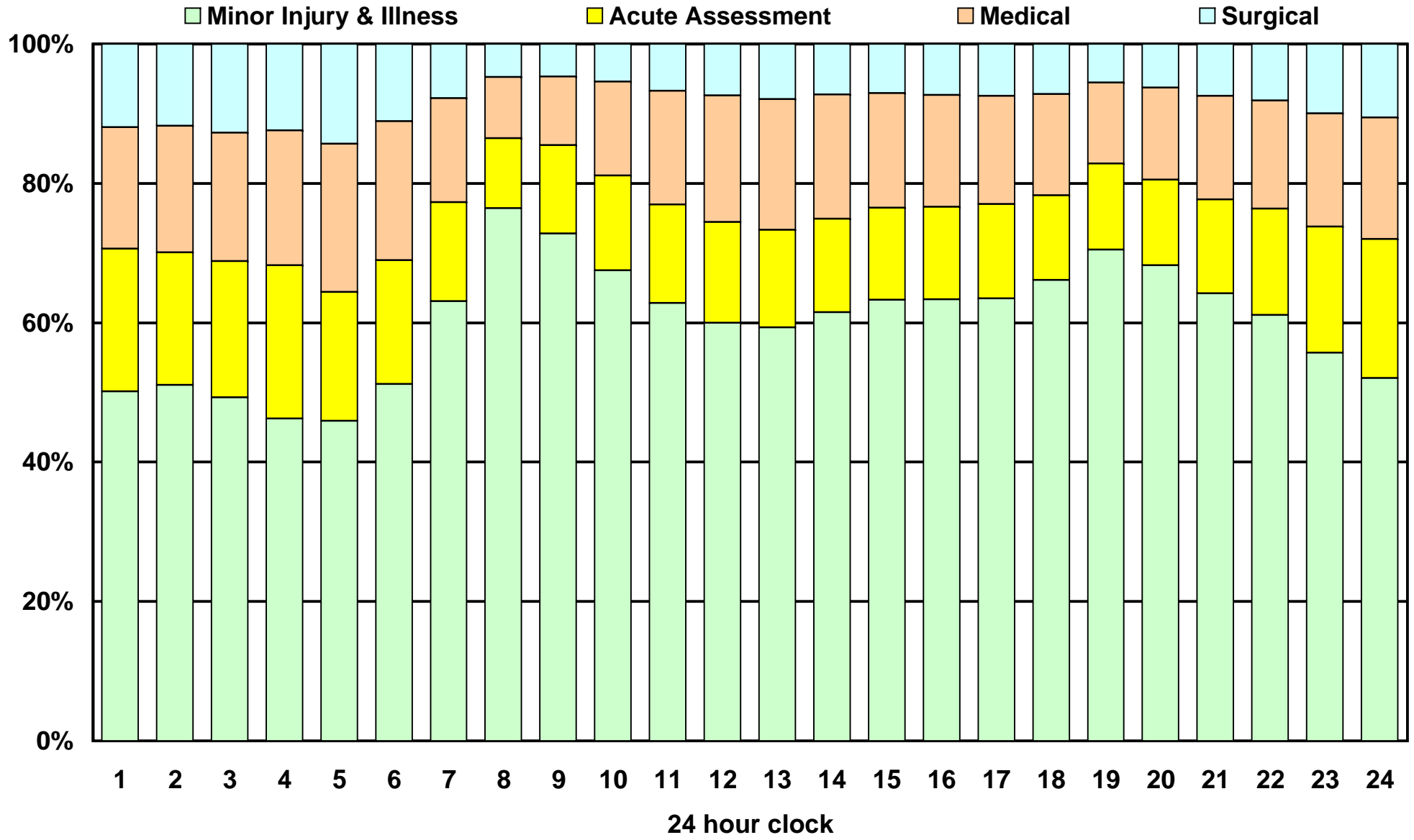
### A&E presentations at **all NHSL** hospitals by time of the day - 2006/07



A&E presentations at all NHSL hospitals by time of the day and flow group - 2006/07



**A&E presentations at all NHSL hospitals by time of the day and flow group - 2006/07**  
**% distribution by flow group**



NHS Lanarkshire

April 2006 - March 2007

source: EDIS A&amp;E system

**Estimated Attendances per Site per Scenarios A-D**

based on 2006/2007 A&E attendances and assumes Emergency Referral Service will direct referrals to the most appropriate site. Where required, split of MK attendances are 45% to HM 55% to WG

**Scenario A**

Self referred non directed acute assessment and admissions will attend MK. Admissions would be transferred.

Site	Total attendances	Minor Injury & Illness	Acute Assessment	Medical admissions	Surgical admissions	Deaths
Hairmyres	63309	35877	9485	12300	5523	124
Monklands	43590	35885	4132	2115	1444	14
Wishaw	77003	44061	12017	14102	6679	144
<b>Total</b>	<b>183902</b>	<b>115823</b>	<b>25634</b>	<b>28517</b>	<b>13646</b>	<b>282</b>

**Scenario B**

90% acute assessment and all self referred non directed admissions will attend MK. Admissions would be transferred.

Site	Total attendances	Minor Injury & Illness	Acute Assessment	Medical admissions	Surgical admissions	Deaths
Hairmyres	61182	35877	7358	12300	5523	124
Monklands	48316	35885	8858	2115	1444	14
Wishaw	74404	44061	9418	14102	6679	144
<b>Total</b>	<b>183902</b>	<b>115823</b>	<b>25634</b>	<b>28517</b>	<b>13646</b>	<b>282</b>

**Scenario C**

90% acute assessment and all self referred non directed admissions will attend MK plus 50% of directed admissions, expected to stay <48 hours. Longer stay admissions would be transferred.

Site	Total attendances	Minor Injury & Illness	Acute Assessment	Medical admissions	Surgical admissions	Deaths
Hairmyres	58905	35877	7358	10039	5523	108
Monklands	53377	35885	8858	7140	1444	50
Wishaw	71620	44061	9418	11338	6679	124
<b>Total</b>	<b>183902</b>	<b>115823</b>	<b>25634</b>	<b>28517</b>	<b>13646</b>	<b>282</b>

**Scenario D**

90% acute assessment and all self referred non directed admissions will attend MK plus 90% (Cardio to HM) of Medical directed admissions.

Site	Total attendances	Minor Injury & Illness	Acute Assessment	Medical admissions	Surgical admissions	Deaths
Hairmyres	57649	35877	7358	8783	5523	108
Monklands	57397	35885	8858	11160	1444	50
Wishaw	68856	44061	9418	8574	6679	124
<b>Total</b>	<b>183902</b>	<b>115823</b>	<b>25634</b>	<b>28517</b>	<b>13646</b>	<b>282</b>

NHS Lanarkshire

April 2006 - March 2007

source: EDIS A&amp;E system

**Estimated Attendances per Site per Scenarios E-G**

based on 2006/2007 A&E attendances and assumes Emergency Referral Service will direct referrals to the most appropriate site. Where required, split of MK attendances are 45% to HM 55% to WG

**Scenario E**

90% acute assessment and all self referred non directed admissions will attend MK plus 90% (Cardio to HM) of Medical directed admissions and all non-Trauma Surgical directed admissions.

Site	Total attendances	Minor Injury & Illness	Acute Assessment	Medical admissions	Surgical admissions	Deaths
Hairmyres	56351	35877	7358	8783	4242	91
Monklands	60281	35885	8858	11160	4291	87
Wishaw	67270	44061	9418	8574	5113	104
<b>Total</b>	<b>183902</b>	<b>115823</b>	<b>25634</b>	<b>28517</b>	<b>13646</b>	<b>282</b>

**Scenario F**

90% acute assessment and all self referred non directed admissions will attend MK plus 90% (Cardio to HM) of Medical directed admissions and all Surgical directed admissions.

Site	Total attendances	Minor Injury & Illness	Acute Assessment	Medical admissions	Surgical admissions	Deaths
Hairmyres	55957	35877	7358	8783	3848	91
Monklands	61156	35885	8858	11160	5166	87
Wishaw	66789	44061	9418	8574	4632	104
<b>Total</b>	<b>183902</b>	<b>115823</b>	<b>25634</b>	<b>28517</b>	<b>13646</b>	<b>282</b>

**Scenario G**

90% acute assessment and all self referred non directed admissions will attend MK plus 90% (Cardio to HM) of Medical directed admissions. Trauma Surgical directed admissions to HM and WG. **N.B. Figures do not take into account directed admissions to subspecialties.**

Site	Total attendances	Minor Injury & Illness	Acute Assessment	Medical admissions	Surgical admissions	Deaths
Hairmyres	56351	35877	7358	8783	4242	91
Monklands	60281	35885	8858	11160	4291	87
Wishaw	67270	44061	9418	8574	5113	104
<b>Total</b>	<b>183902</b>	<b>115823</b>	<b>25634</b>	<b>28517</b>	<b>13646</b>	<b>282</b>

NHS Lanarkshire

**Delay Reason Summary Monklands Hospital only**

Aug 06 to Aug 07



	Aug-06	Sep-06	Oct-06	Nov-06	Dec-06	Jan-07	Feb-07	Mar-07	Apr-07	May-07	Jun-07	Jul-07	Aug-07	Total
WAIT FOR A BED	49	77	67	16	90	196	53	134	161	58	44	7	7	959
<b>WAIT FOR A SPECIALIST</b>	<b>76</b>	<b>109</b>	<b>46</b>	<b>34</b>	<b>54</b>	<b>55</b>	<b>46</b>	<b>68</b>	<b>85</b>	<b>56</b>	<b>44</b>	<b>42</b>	<b>41</b>	<b>756</b>
WAIT FOR DIAGNOSTIC TEST RESULTS	33	28	15	5	13	12	15	15	20	14	12	9	15	206
WAIT FOR DIAGNOSTIC TESTS TO BE PERFORMED	7	15	6	6	3	7	5	2	10	3	9	3	6	82
WAIT FOR FIRST ASSESSMENT	111	104	85	46	64	90	37	90	90	64	60	108	84	1,033
WAIT FOR PORTERING	0	1	1	4	0	1	1	3	0	2	2	1	0	16
WAIT FOR TRANSPORT (COMMISSIONED BY A&E)	11	29	16	14	11	11	11	8	9	7	11	7	8	153
WAIT FOR TREATMENT TO BE COMPLETED	22	43	10	14	12	24	15	32	29	13	21	14	9	258
WAIT FOR TREATMENT TO COMMENCE	2	1	0	0	1	0	0	3	0	0	0	1	0	8
OTHER - SPECIFY IN FREE TEXT	19	20	27	23	27	30	48	33	33	34	33	27	24	378
<b>Total</b>	<b>330</b>	<b>427</b>	<b>273</b>	<b>162</b>	<b>275</b>	<b>426</b>	<b>231</b>	<b>388</b>	<b>437</b>	<b>251</b>	<b>236</b>	<b>219</b>	<b>194</b>	<b>3,849</b>

	Aug-06	Sep-06	Oct-06	Nov-06	Dec-06	Jan-07	Feb-07	Mar-07	Apr-07	May-07	Jun-07	Jul-07	Aug-07	Average
WAIT FOR A BED	15%	18%	25%	10%	33%	46%	23%	35%	37%	23%	19%	3%	4%	4%
<b>WAIT FOR A SPECIALIST</b>	<b>23%</b>	<b>26%</b>	<b>17%</b>	<b>21%</b>	<b>20%</b>	<b>13%</b>	<b>20%</b>	<b>18%</b>	<b>19%</b>	<b>22%</b>	<b>19%</b>	<b>19%</b>	<b>21%</b>	<b>21%</b>
WAIT FOR DIAGNOSTIC TEST RESULTS	10%	7%	5%	3%	5%	3%	6%	4%	5%	6%	5%	4%	8%	8%
WAIT FOR DIAGNOSTIC TESTS TO BE PERFORMED	2%	4%	2%	4%	1%	2%	2%	1%	2%	1%	4%	1%	3%	3%
WAIT FOR FIRST ASSESSMENT	34%	24%	31%	28%	23%	21%	16%	23%	21%	25%	25%	49%	43%	43%
WAIT FOR PORTERING	0%	0%	0%	2%	0%	0%	0%	1%	0%	1%	1%	0%	0%	0%
WAIT FOR TRANSPORT (COMMISSIONED BY A&E)	3%	7%	6%	9%	4%	3%	5%	2%	2%	3%	5%	3%	4%	4%
WAIT FOR TREATMENT TO BE COMPLETED	7%	10%	4%	9%	4%	6%	6%	8%	7%	5%	9%	6%	5%	5%
WAIT FOR TREATMENT TO COMMENCE	1%	0%	0%	0%	0%	0%	0%	1%	0%	0%	0%	0%	0%	0%
OTHER - SPECIFY IN FREE TEXT	6%	5%	10%	14%	10%	7%	21%	9%	8%	14%	14%	12%	12%	12%
<b>Total</b>	<b>330</b>	<b>427</b>	<b>273</b>	<b>162</b>	<b>275</b>	<b>426</b>	<b>231</b>	<b>388</b>	<b>437</b>	<b>251</b>	<b>236</b>	<b>219</b>	<b>194</b>	<b>3,849</b>