

Table 1: Staphylococcus Aureus Bacteraemia Rates per 1000 Acute Occupied Bed Days, Hairmyres Hospital (December 2007 – April 2009)

Episodes of S.Aureus Bacteraemias in NHS Lanarkshire Acute Hospital Wards



MONTHLY REPORT

Date Range: 01/12/2006 to 30/04/2009

Department of Clinical

- SAB patient episodes are defined as the total number of patients from whom blood culture sets

Effectiveness

collected during the time period grew staph. aureus

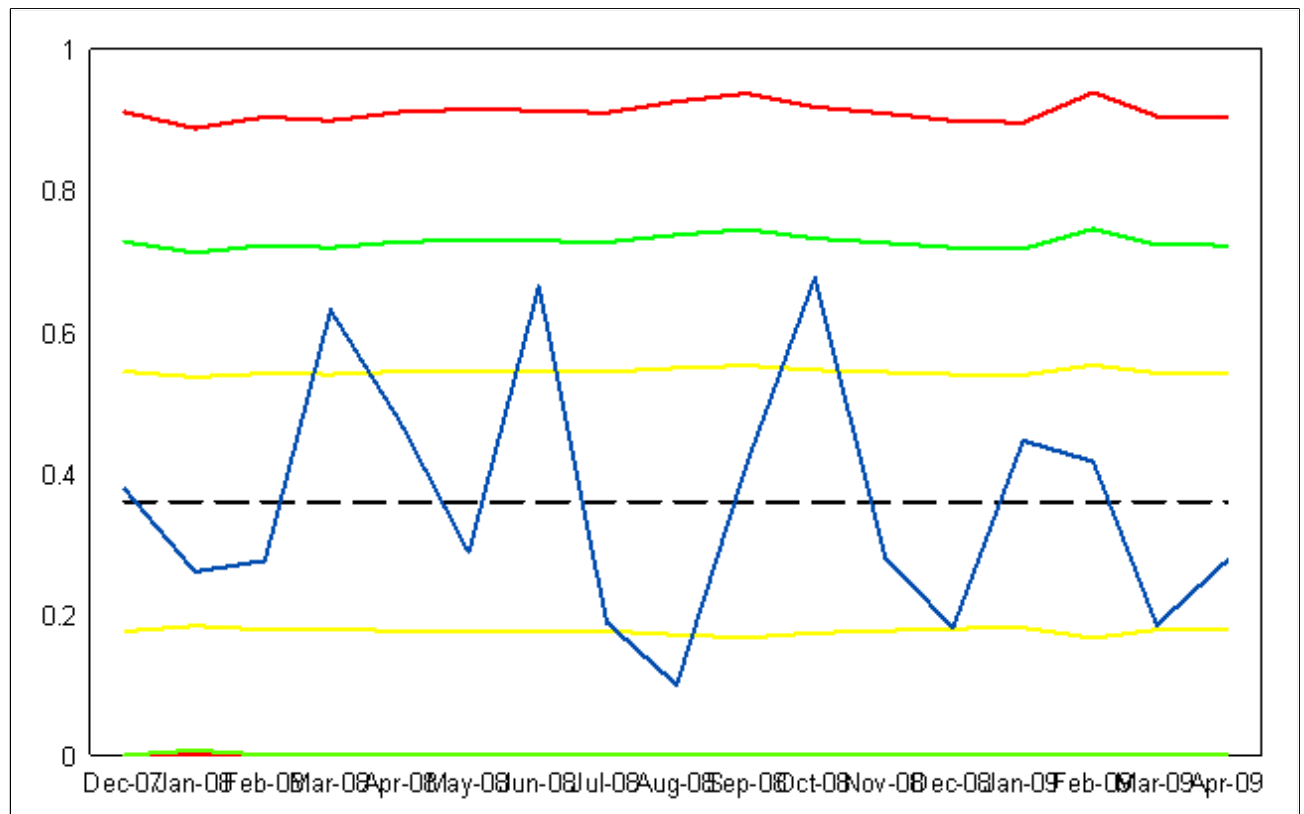
- A blood culture set is defined as a sample arising from a single venepuncture, irrespective of the number of bottles tested.

- Patients are counted once even if they have multiple positive tests. However, patients with a positive blood culture set after a 14-day gap with no positive blood culture sets will be counted as a new episode.

- The data reported is all derived from NHS Lanarkshire laboratory data.

- The data reported is inclusive of all incidences irrespective of where they are acquired

S.Aureus Bacteraemia rates per 1000 Acute Occupied Bed Days - HAIRMYRES HOSPITAL



—————	Rate of SABs per 1000 AOBs	—————	Upper & Lower Control
-----	Median	—————	Upper & Lower Warning
-----	Limits set at 2 sd	—————	Upper & Lower Highlight
-----	Limits set at 1 sd		

Table 2: Staphylococcus Aureus Bacteraemia Rates per 1000 Acute Occupied Bed Days, Wishaw Hospital (December 2007 – April 2009)

Episodes of S.Aureus Bacteraemias in NHS Lanarkshire Acute Hospital Wards



MONTHLY REPORT

Date Range: 01/12/2006 to 30/04/2009

Department of Clinical

- SAB patient episodes are defined as the total number of patients from whom blood culture sets

Effectiveness

collected during the time period grew *staph. aureus*

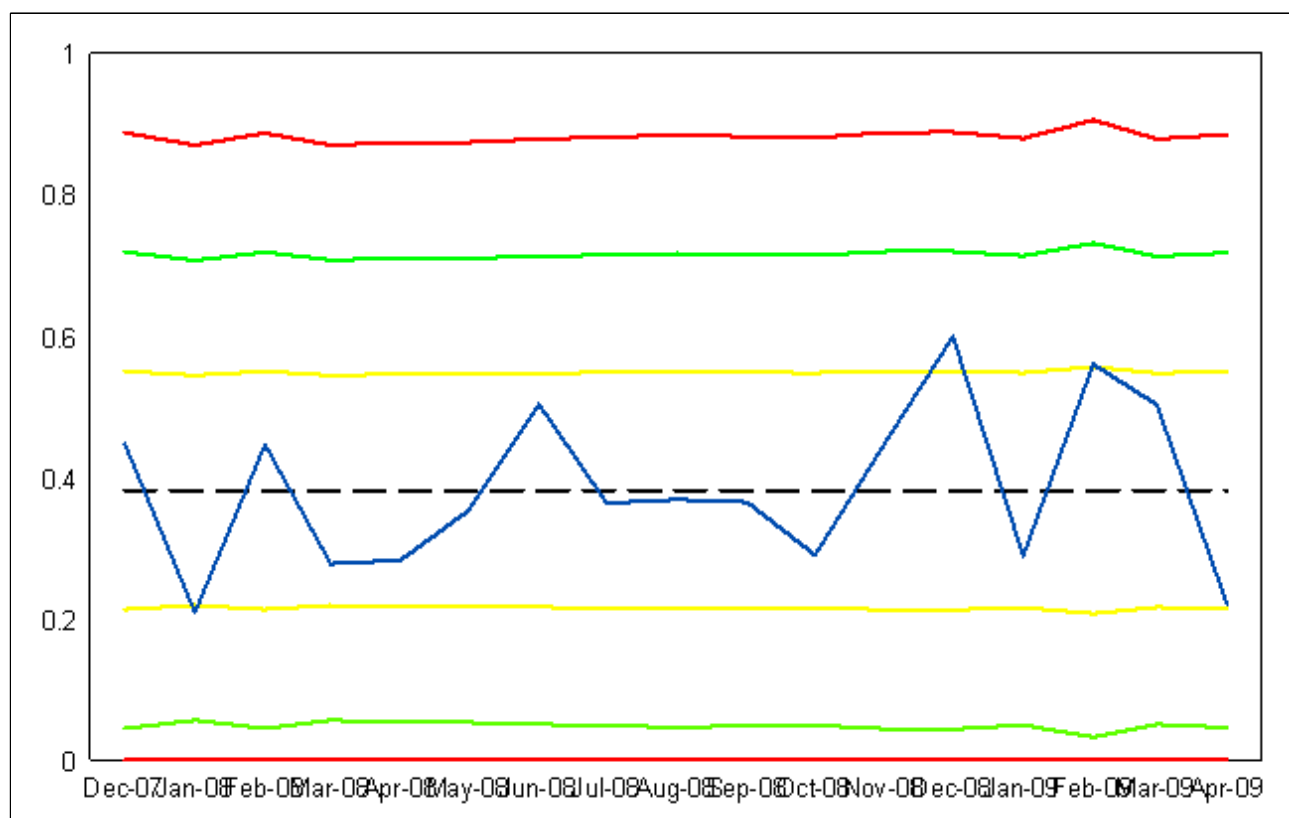
- A blood culture set is defined as a sample arising from a single venepuncture, irrespective of the number of bottles tested.

- Patients are counted once even if they have multiple positive tests. However, patients with a positive blood culture set after a 14-day gap with no positive blood culture sets will be counted as a new episode.

- The data reported is all derived from NHS Lanarkshire laboratory data.

- The data reported is inclusive of all incidences irrespective of where they are acquired

S.Aureus Bacteraemia rates per 1000 Acute Occupied Bed Days - WISHAW HOSPITAL



— Rate of SABs per 1000 AOBs

Limits set at 3 sd

- - - Median

Limits set at 2 sd

Limits set at 1 sd

— Upper & Lower Control

— Upper & Lower Warning

— Upper & Lower Highlight

Table 3: Staphylococcus Aureus Bacteraemia Rates per 1000 Acute Occupied Bed Days, Monklands Hospital (December 2007 – April 2009).

Episodes of S.Aureus Bacteraemias in NHS Lanarkshire Acute Hospital Wards



MONTHLY REPORT

Date Range: 01/12/2006 to 30/04/2009

Department of Clinical

- SAB patient episodes are defined as the total number of patients from whom blood culture sets

Effectiveness

collected during the time period grew staph. aureus

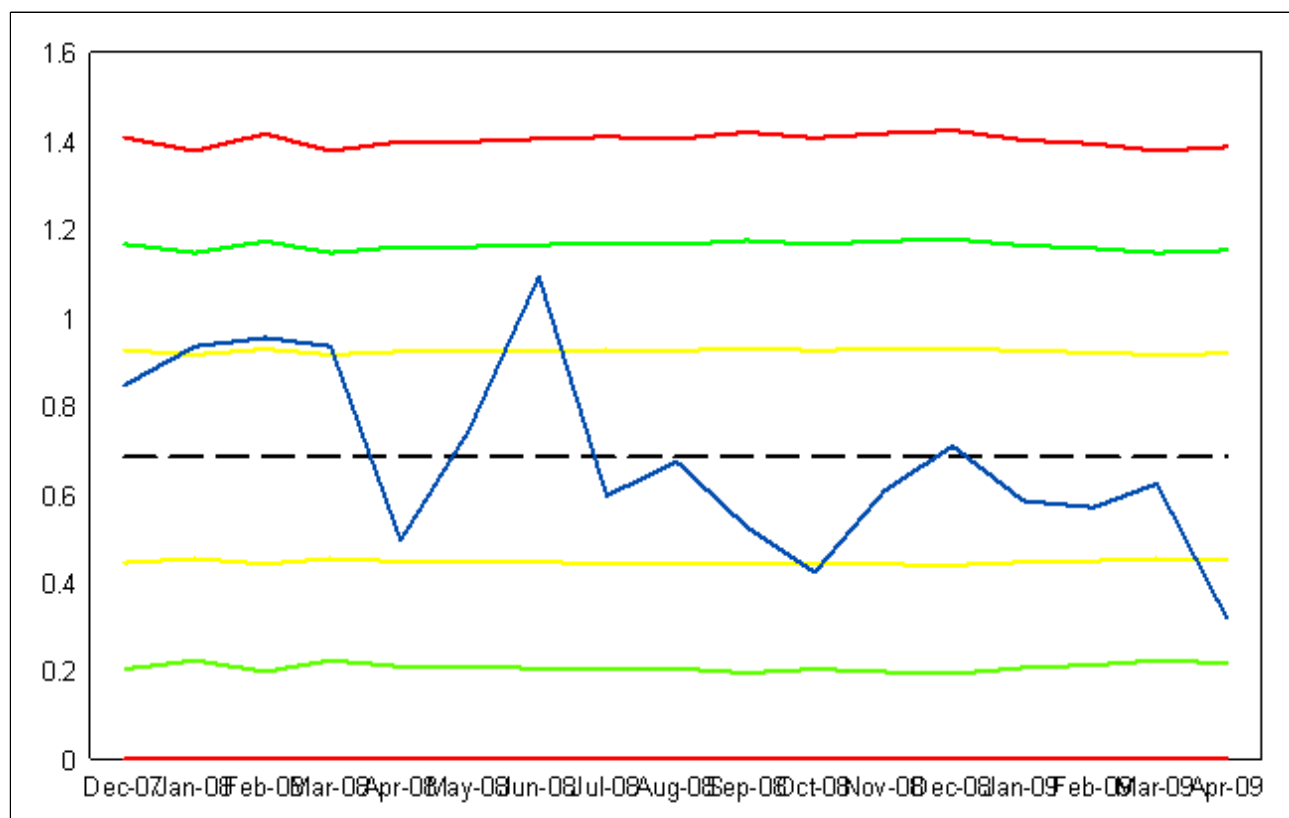
- A blood culture set is defined as a sample arising from a single venepuncture, irrespective of the number of bottles tested.

- Patients are counted once even if they have multiple positive tests. However, patients with a positive blood culture set after a 14-day gap with no positive blood culture sets will be counted as a new episode.

- The data reported is all derived from NHS Lanarkshire laboratory data.

- The data reported is inclusive of all incidences irrespective of where they are acquired

S.Aureus Bacteraemia rates per 1000 Acute Occupied Bed Days - MONKLANDS HOSPITAL



—————	Rate of SABs per 1000 AOBs	—————	Upper & Lower Control
-----	Median	—————	Upper & Lower Warning
-----	Limits set at 2 sd	—————	Upper & Lower Highlight
-----	Limits set at 3 sd		

Table 7: Clostridium Difficile Associated Disease Rates per 1000 Acute Occupied Bed Days, Hairmyres Hospital (December 2007 – April 2009)

Episodes of *C. difficile* in NHS Lanarkshire Acute Hospital Wards



MONTHLY REPORT

Date Range: 01/12/2007 to 30/04/2009

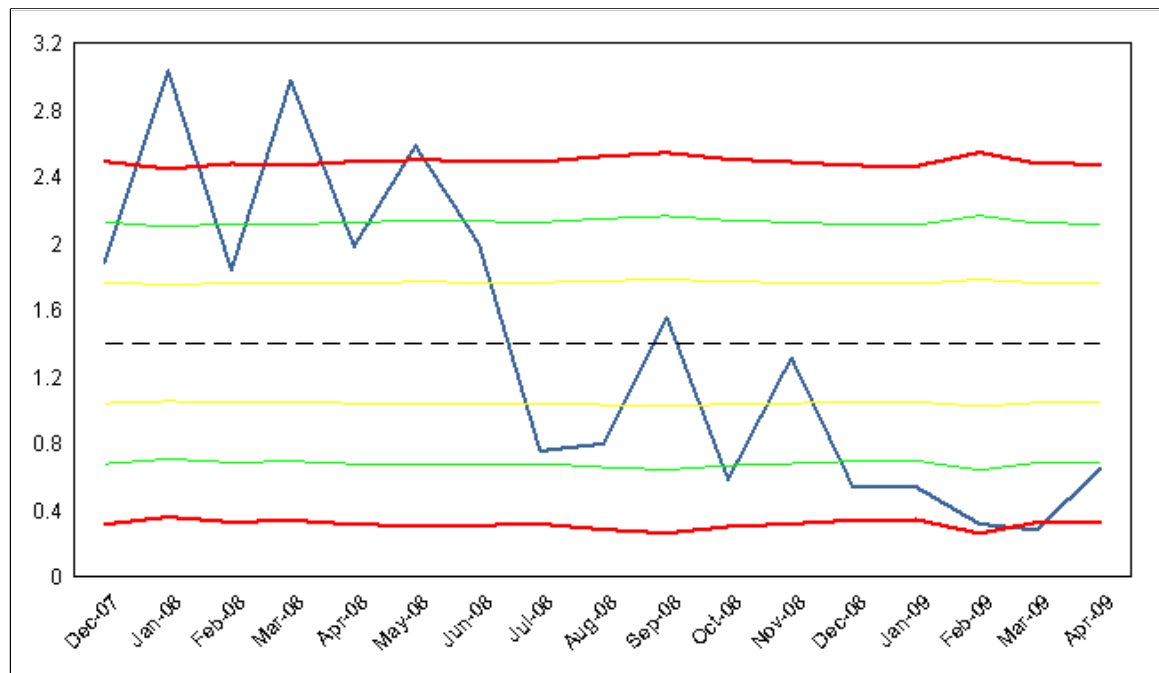
Department of

Clinical

Effectiveness

- An episode is defined as a *C. difficile* toxin positive stool sample.
- Patients are counted once even if they have multiple positive tests. However, patients with a *C. difficile* toxin positive stool sample after a 28-day gap with no positive toxin tests will be counted as a new episode.
- The data reported is all derived from NHS Lanarkshire laboratory data.
- The data reported is inclusive of all incidences irrespective of where they are acquired

***C. difficile* Incidence rates per 1000 Acute Occupied Bed Days - HAIRMYRES HOSPITAL**



Rate of SABs per 1000 AOBs at 3 sd

Upper & Lower Control Limits set

Median at 2 sd

Upper & Lower Warning Limits set

at 1 sd

Upper & Lower Highlight Limits set

Table 8: Clostridium Difficile Associated Disease Rates per 1000 Acute Occupied Bed Days, Wishaw Hospital (December 2007 – April 2009)

Episodes of *C. difficile* in NHS Lanarkshire Acute Hospital Wards



MONTHLY REPORT

Date Range: 01/12/2007 to 30/04/2009

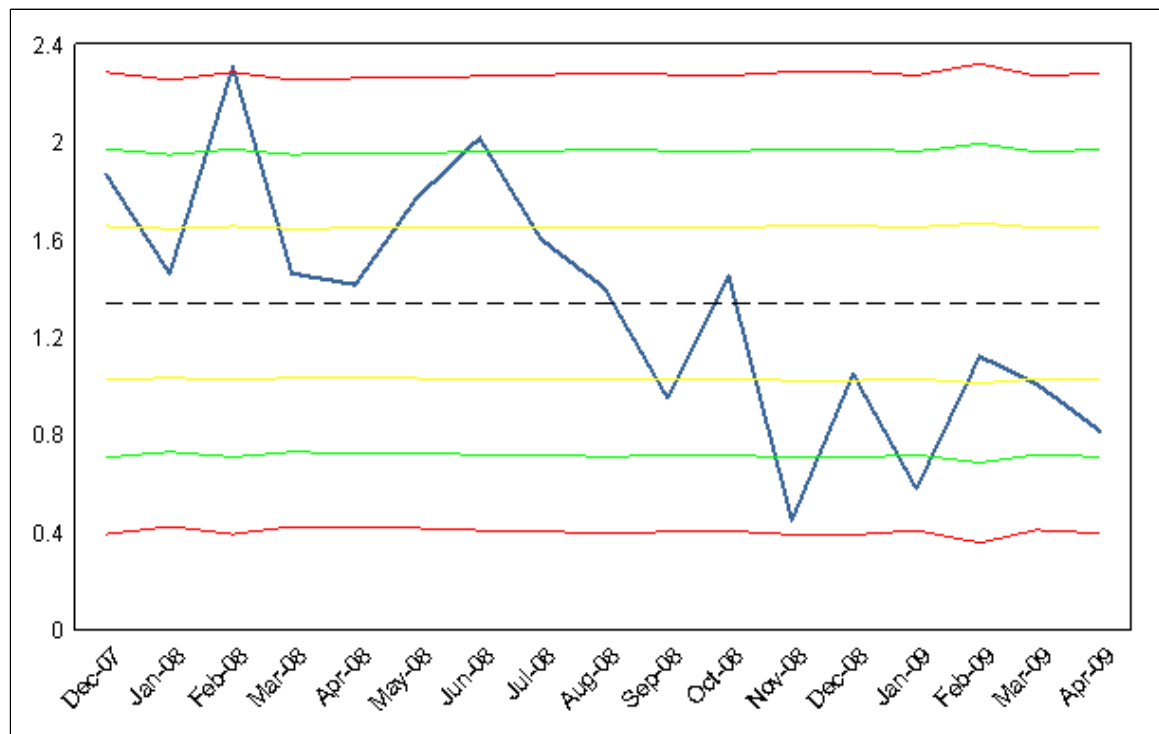
Department of

Clinical

Effectiveness

- An episode is defined as a *C. difficile* toxin positive stool sample.
- Patients are counted once even if they have multiple positive tests. However, patients with a *C. difficile* toxin positive stool sample after a 28-day gap with no positive toxin tests will be counted as a new episode.
- The data reported is all derived from NHS Lanarkshire laboratory data.
- The data reported is inclusive of all incidences irrespective of where they are acquired

***C. difficile* Incidence rates per 1000 Acute Occupied Bed Days - WISHAW HOSPITAL**



————— Rate of SABs per 1000 AOBs
at 3 sd

----- Median
at 2 sd

at 1 sd

————— Upper & Lower Control Limits set

————— Upper & Lower Warning Limits set

————— Upper & Lower Highlight Limits set

Table 9: Clostridium Difficile Associated Disease Rates per 1000 Acute Occupied Bed Days, Monklands Hospital (December 2007 – April 2009)

Episodes of C. difficile in NHS Lanarkshire Acute Hospital Wards



MONTHLY REPORT

Date Range: 01/12/2007 to 30/04/2009

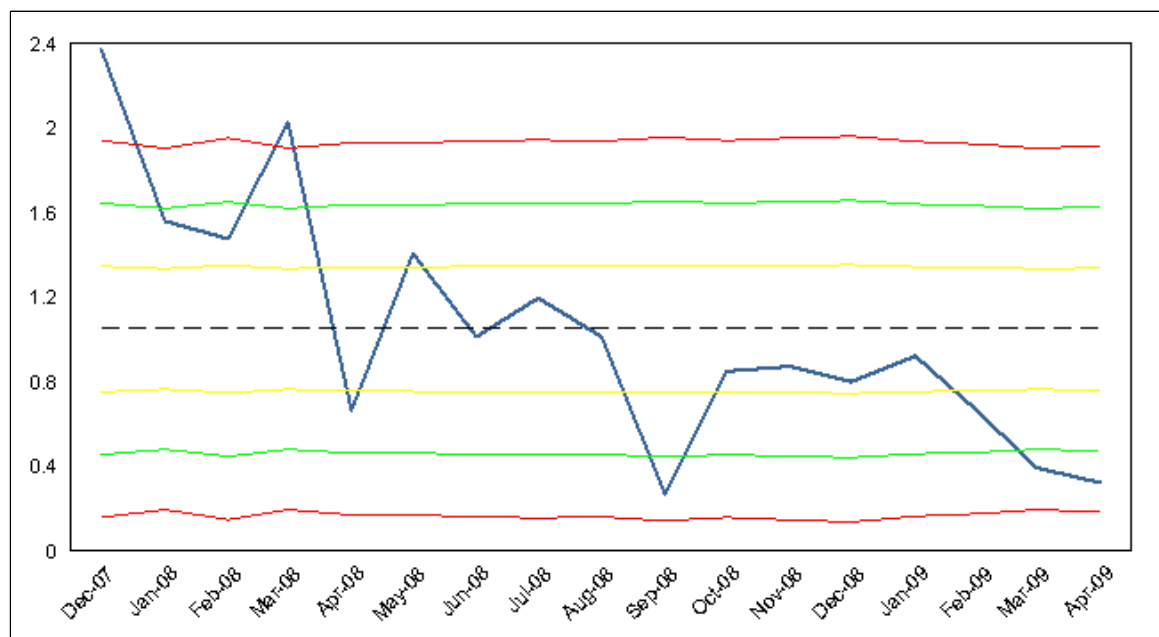
Department of

Clinical

Effectiveness

- An episode is defined as a C. difficile toxin positive stool sample.
- Patients are counted once even if they have multiple positive tests. However, patients with a C. difficile toxin positive stool sample after a 28-day gap with no positive toxin tests will be counted as a new episode.
- The data reported is all derived from NHS Lanarkshire laboratory data.
- The data reported is inclusive of all incidences irrespective of where they are acquired

C. difficile Incidence rates per 1000 Acute Occupied Bed Days - MONKLANDS HOSPITAL



—————	Rate of SABs per 1000 AOBs	—————	Upper & Lower Control Limits set
at 3 sd			
-----	Median	—————	Upper & Lower Warning Limits set
at 2 sd			
at 1 sd		—————	Upper & Lower Highlight Limits set

